



中国认可  
国际互认  
检测  
TESTING  
CNAS L7472

# TEST REPORT

## 检测报告



Report No./报告号: A2112058-C01-R03

Page 1 of 17/第1页,共 17 页

**Applicant:** Shenzhen Esun Industrial Co., Ltd.  
**申请商:** 深圳光华伟业股份有限公司  
**Address:** Wuhan University Building A403-I and A901, No.6 Yuexing 2 Road, Nanshan District, Shenzhen, China  
**地址:** 深圳市南山区粤兴二道 6 号武汉大学深圳产学研大楼 A403-I 及 A901

The following sample(s) and sample information was/were submitted and identified by/on the behalf of the client/以下测试之样品及样品信息由申请者提供并确认:

**Sample Name** eBox Lite  
**样品名称**  
**Sample Received Date** December 06, 2021  
**样品接收日期** 2021 年 12 月 06 日  
**Testing Period** December 06 - 28, 2021  
**检测日期** 2021 年 12 月 06 日至 2021 年 12 月 28 日  
**Test Method & Test Result** Please refer to following pages.  
**检测依据和检测结果** 请参考下一页

**Test Requested/检测要求**

As specified by client, according to RoHS Directive 2011/65/EU with amendment (EU) 2015/863 to test Lead (Pb), Cadmium (Cd), Mercury (Hg), Hexavalent Chromium(Cr(VI)), Polybrominated Biphenyls(PBBs), Polybrominated Diphenyl Ethers(PBDEs), Phthalates (Dibutyl phthalate(DBP), Benzylbutyl phthalate(BBP), Di-2-ethylhexyl phthalate(DEHP), Diisobutyl phthalate(DIBP)) in the tested materials of the submitted sample(s).

根据客户要求, 依据指令 2011/65/EU 及修订指令(EU) 2015/863 对所提交样品检测材料中的铅(Pb), 镉(Cd), 汞(Hg), 六价铬(Cr(VI)), 多溴联苯(PBBs), 多溴二苯醚(PBDEs), 邻苯二甲酸酯(邻苯二甲酸二丁酯(DBP)、邻苯二甲酸丁基苯酯(BBP)、邻苯二甲酸二乙基己基酯(DEHP)、邻苯二甲酸二异丁酯(DIBP))进行检测。

**Result/结果**

Pass /合格

**Tested by:**  
**主 检:** Anne Zhao

**Approved by:**  
**签 发:**

**Reviewed by:**  
**审 核:** Tony Gmy

**Date of issue:** December 31, 2021  
**签发日期:** 2021年12月31日



# TEST REPORT

## 检测报告



Report No./报告号: A2112058-C01-R03

Page 2 of 17/第2页,共 17 页

Test Method/检测依据

(1) XRF Screening limits for regulated elements according to IEC 62321-3-1:2013 (Unit:mg/kg)/  
IEC 62321-3-1:2013 对管控元素的 XRF 筛选限值 (单位: mg/kg)

Element/ 测试元素	Polymers / 聚合物	Metals/ 金属	Composite material/ 合成材料
Pb	$BL \leq (700-3\sigma) < X$ $< (1300+3\sigma) \leq OL$	$BL \leq (700-3\sigma) < X$ $< (1300+3\sigma) \leq OL$	$BL \leq (500-3\sigma) < X$ $< (1500+3\sigma) \leq OL$
Cd	$BL \leq (70-3\sigma) < X < (130+3\sigma)$ $\leq OL$	$BL \leq (70-3\sigma) < X < (130+3\sigma)$ $\leq OL$	$LOD < X < (150+3\sigma) \leq OL$
Hg	$BL \leq (700-3\sigma) < X$ $< (1300+3\sigma) \leq OL$	$BL \leq (700-3\sigma) < X$ $< (1300+3\sigma) \leq OL$	$BL \leq (500-3\sigma) < X$ $< (1500+3\sigma) \leq OL$
Cr	$BL \leq (700-3\sigma) < X$	$BL \leq (700-3\sigma) < X$	$BL \leq (500-3\sigma) < X$
Br	$BL \leq (300-3\sigma) < X$	N/A	$BL \leq (250-3\sigma) < X$

(2) Chemical screening limits for Phthalates/邻苯二甲酸酯的筛选限值

Test Item(s)/ 测试项目	Screening limits(Unit: mg/kg) 筛选限值 (单位: mg/kg)
Dibutyl phthalate(DBP) 邻苯二甲酸二正丁酯(DBP)	$BL \leq 600 < IN$
Benzylbutyl phthalate(BBP) 邻苯二甲酸丁基苄酯(BBP)	$BL \leq 600 < IN$
Di-2-ethylhexyl phthalate(DEHP) 邻苯二甲酸二(2-乙基己基)酯(DEHP)	$BL \leq 600 < IN$
Diisobutyl phthalate(DIBP) 邻苯二甲酸二异丁酯(DIBP)	$BL \leq 600 < IN$

# TEST REPORT

## 检测报告



Report No./报告号: A2112058-C01-R03

Page 3 of 17/第3页,共 17 页

### (3) Chemical Test/化学测试

Tested Item(s) 测试项目	Test Method 测试方法	Measured Equipment(s) 测试仪器	MDL 方法检出限	Limit 限值
Lead (Pb) 铅(Pb)	IEC 62321-5:2013	ICP-OES	2 mg/kg	1000 mg/kg
Cadmium (Cd) 镉(Cd)	IEC 62321-5:2013	ICP-OES	2 mg/kg	100 mg/kg
Mercury (Hg) 汞(Hg)	IEC 62321-4: 2013+AMD1:2017	ICP-OES	2 mg/kg	1000 mg/kg
Hexavalent Chromium (Cr(VI)) 六价铬(Cr(VI))	IEC 62321-7-2:2017 and/or determination of Total Chromium by IEC 62321-5: 2013	UV-Vis	8 mg/kg	1000 mg/kg
	IEC 62321-7-1:2015		0.10µg/cm <sup>2</sup> (LOQ)	1000 mg/kg
Polybrominated Biphenyls (PBBs) 多溴联苯(PBBs)	IEC 62321-6:2015	GC-MS	5mg/kg	1000 mg/kg
Polybrominated Diphenyl Ethers (PBDEs) 多溴二苯醚(PBDEs)	IEC 62321-6:2015	GC-MS	5mg/kg	1000 mg/kg
(DBP, BBP, DEHP, DIBP) 邻苯二甲酸酯/ Phthalates	IEC 62321-8:2017	GC-MS	50 mg/kg	单项 1000 mg/kg/ 1000 mg/kg for each



# TEST REPORT

## 检测报告



Report No./报告号: A2112058-C01-R03

Page 4 of 17/第4页,共 17 页

### Tested Material Description

### 测试材料描述

No. 序号	Description 描述	No. 序号	Description 材料描述
1	Translucent plastic wire feed pipe/ 半透明塑胶送丝管	21	Black plastic key-press of box cover plate/ 料盒盖板黑色塑料按键
2	White plastic sleeve of wire feed pipe/ 送丝管白色塑胶套	22	polarizing film of display screen/ 显示屏屏幕偏光膜
3	Transparent plastic cover of box/ 料盒透明塑料盖	23	Display screen/ 显示屏屏幕
4	Silver metal plate roller of box/ 料盒银色金属料盘滚轴	24	Crystal oscillator/ 晶体二极管
5	Silvery metal bearing of box roller/ 料盘滚轴银色金属轴承	25	Chip triode/ 贴片三极管
6	Silvery metal heat conduction sheet of box/ 料盒银色金属导热片	26	IC
7	Green translucent film of heat film (box)/ 料盒发热膜绿色半透明胶膜	27	IC
8	Silvery metal heating sheet of heat film (box)/料盒发热膜银色金属发热片	28	Soldering tin on main PCB (box)/ 料盒主 PCB 板焊锡
9	Translucent double-sided adhesive of heat film (box)/料盒发热膜半透明双面胶	29	Dark green main PCB of box/ 料盒深绿色主 PCB 板
10	Red thin wire sheath of heating strip connecting wire/发热片连接线红色细线皮	30	Silvery aluminum foil of box heat insulation foam/料盒隔热泡棉银色铝箔
11	Black thin wire sheath of heating strip connecting wire/发热片连接线黑色细线皮	31	Black heat insulation foam of box/ 料盒黑色隔热泡棉
12	Thermistor/ 热敏电阻	32	Silvery gray label sticker of box/ 料盒银灰色标签胶贴纸
13	Red thin wire sheath of thermistor connecting wire 热敏电阻连接线红色细线皮	33	White plastic box/ 白色塑料料盒
14	Black thin wiresheath of thermistor connecting wire/ 热敏电阻连接线黑色细线皮	34	Red thin wire sheath of DC terminal base connecting wire/ DC 座连接线红色细线皮
15	Black plastic bracket for turbofan/ 涡轮风扇黑色塑料支架	35	Black thin wire sheath of DC terminal base connecting wire/DC 座连接线黑色 细线皮
16	black plastic impeller of turbofan/ 涡轮风扇黑色塑料叶轮	36	Black plastic base of DC terminal base/DC 座黑色塑料座
17	Red thin wire sheath of turbofan connecting wire/ 涡轮风扇连接线红色细线皮	37	Silvery metal pin of DC terminal base/ DC 座银色金属针
18	Black thin wire sheath of turbofan connecting wire/ 涡轮风扇连接线黑色细线皮	38	White plastic bottom cover of box/ 料盒白色塑料底盖板
19	White plastic terminal of connecting wire/ 连接线白色塑料端子	39	Double sided adhesive of rubber footpad (box bottom cover)/盒底盖板脚 垫双面胶
20	Black plastic cover plate of box/ 料盒黑色塑料盖板	40	Black rubber footpad for box bottom cover/盒底盖板黑色胶脚垫

Shenzhen Alpha Product Testing Co., Ltd./ 深圳阿尔法商品检验有限公司

Building i, No.2, Lixin Road, Fuyong Street, Bao'an District, 518103, Shenzhen, Guangdong, China

广东省深圳市宝安区福永街道立新路2号i栋阿尔法检验中心

# TEST REPORT

## 检测报告



Report No./报告号: A2112058-C01-R03

Page 5 of 17/第5页,共 17 页

### Tested Material Description

#### 测试材料描述

No. 序号	Description 描述	No. 序号	Description 材料描述
41	Black plastic shell of adapter/ 适配器黑色塑料外壳	52	Soldering tin on adapter PCB/ 适配器 PCB 板焊锡
42	Silvery metal plug of adapter/ 适配器银色金属插头	53	Green PCB of adapter/ 适配器绿色 PCB 板
43	White fixing glue on PCB/ PCB 板白色固定胶	54	Black plastic tail card of adapter line/ 适配器线黑色塑胶尾卡
44	Silvery gray cooling fin of PCB/ PCB 板银灰色散热片	55	Black thick wire sheath of adapter line/ 适配器线黑色粗线皮
45	Yellow adhesive tape of transformer / 变压器黄色胶带	56	Red thin wire sheath of adapter line/ 适配器线红色细线皮
46	Gray black magnetic core of transformer / 变压器灰黑色磁芯	57	Black thin wire sheath of adapter line/ 适配器线黑色细线皮
47	Copper coil of transformer / 变压器铜色线圈	58	Black plastic head DC terminal (adapter line)/适配器线 DC 端子黑色塑胶头
48	Black reel of transformer / 变压器黑色绕线架	59	Soldering tin on DC terminal (adapter line)/适配器线 DC 端子焊锡点
49	Safety capacitor/ 安规电容	60	Black plastic of DC terminal (adapter line)/适配器线 DC 端子黑色塑料
50	CS12N65F field-effect tube/ CS12N65F 场效应管	61	Silvery metal of DC terminal (adapter line)/适配器线 DC 端子银色金属
51	IC		

Shenzhen Alpha Product Testing Co., Ltd./ 深圳阿尔法商品检验有限公司

Building i, No.2, Lixin Road, Fuyong Street, Bao'an District, 518103, Shenzhen, Guangdong, China

广东省深圳市宝安区福永街道立新路2号i栋阿尔法检验中心

# TEST REPORT

## 检测报告



Report No./报告号: A2112058-C01-R03

Page 6 of 17/第6页,共 17 页

### Test result /检测结果

#### (1) Screening Result/筛选结果

Tested Item(s)/测试项目	Screening Result/筛选结果 (mg/kg)									
	1	2	3	4	5	6	7	8	9	10
Lead (Pb)/ 铅(Pb)	BL	BL	BL	BL	BL	BL	BL	BL	BL	BL
Cadmium (Cd)/ 镉(Cd)	BL	BL	BL	BL	BL	BL	BL	BL	BL	BL
Mercury (Hg)/ 汞(Hg)	BL	BL	BL	BL	BL	BL	BL	BL	BL	BL
Total Chromium (Cr)/总铬	BL	BL	BL	X	X	BL	BL	X	BL	BL
Total Bromine (PBBs & PBDEs) 总溴(PBBs & PBDEs)	BL	BL	BL	N/A	N/A	N/A	BL	N/A	BL	BL
Dibutyl phthalate(DBP) 邻苯二甲酸二丁酯(DBP)	BL	BL	BL	N/A	N/A	N/A	BL	N/A	BL	BL
Benzylbutyl phthalate(BBP) 邻苯二甲酸丁基苄酯(BBP)	BL	BL	BL	N/A	N/A	N/A	BL	N/A	BL	BL
Di-2-ethylhexyl phthalate(DEHP) 邻苯二甲酸二乙基己基酯(DEHP)	BL	BL	BL	N/A	N/A	N/A	BL	N/A	BL	BL
Diisobutyl phthalate(DIBP) 邻苯二甲酸二异丁酯(DIBP)	BL	BL	BL	N/A	N/A	N/A	BL	N/A	BL	BL

Tested Item(s)/测试项目	Screening Result/筛选结果 (mg/kg)									
	11	12	13	14	15	16	17	18	19	20
Lead (Pb)/ 铅(Pb)	BL	OL<1>	BL	BL	BL	BL	BL	BL	BL	BL
Cadmium (Cd)/ 镉(Cd)	BL	BL	BL	BL	BL	BL	BL	BL	BL	BL
Mercury (Hg)/ 汞(Hg)	BL	BL	BL	BL	BL	BL	BL	BL	BL	BL
Total Chromium (Cr)/总铬	BL	BL	BL	BL	BL	BL	BL	BL	BL	BL
Total Bromine (PBBs & PBDEs) 总溴(PBBs & PBDEs)	BL	BL	BL	BL	X	X	BL	BL	BL	BL
Dibutyl phthalate(DBP) 邻苯二甲酸二丁酯(DBP)	BL	BL	BL	BL	BL	BL	BL	BL	BL	BL
Benzylbutyl phthalate(BBP) 邻苯二甲酸丁基苄酯(BBP)	BL	BL	BL	BL	BL	BL	BL	BL	BL	BL
Di-2-ethylhexyl phthalate(DEHP) 邻苯二甲酸二乙基己基酯(DEHP)	BL	BL	BL	BL	BL	BL	BL	BL	BL	BL
Diisobutyl phthalate(DIBP) 邻苯二甲酸二异丁酯(DIBP)	BL	BL	BL	BL	BL	BL	BL	BL	BL	BL

Shenzhen Alpha Product Testing Co., Ltd./ 深圳阿尔法商品检验有限公司

Building i, No.2, Lixin Road, Fuyong Street, Bao'an District, 518103, Shenzhen, Guangdong, China  
广东省深圳市宝安区福永街道立新路2号i栋阿尔法检验中心



# TEST REPORT

## 检测报告



Report No./报告号: A2112058-C01-R03

Page 7 of 17/第7页,共 17 页

### (1) Screening Result/筛选结果

Tested Item(s)/测试项目	Screening Result/筛选结果 (mg/kg)									
	21	22	23	24	25	26	27	28 <sup>#</sup>	29	30
Lead (Pb)/ 铅(Pb)	BL	BL	BL	OL <sup>&lt;2&gt;</sup>	BL	BL	BL	BL	BL	BL
Cadmium (Cd)/ 镉(Cd)	BL	BL	BL	BL	BL	BL	BL	BL	BL	BL
Mercury (Hg)/ 汞(Hg)	BL	BL	BL	BL	BL	BL	BL	BL	BL	BL
Total Chromium (Cr)/总铬	BL	BL	BL	BL	BL	BL	BL	BL	BL	BL
Total Bromine (PBBs & PBDEs) 总溴(PBBs & PBDEs)	BL	BL	BL	BL	BL	BL	BL	N/A	BL	N/A
Dibutyl phthalate(DBP) 邻苯二甲酸二丁酯(DBP)	BL	BL	BL	BL	BL	BL	BL	N/A	BL	N/A
Benzylbutyl phthalate(BBP) 邻苯二甲酸丁基苄酯(BBP)	BL	BL	BL	BL	BL	BL	BL	N/A	BL	N/A
Di-2-ethylhexyl phthalate(DEHP) 邻苯二甲酸二乙基己基酯(DEHP)	BL	BL	BL	BL	BL	BL	BL	N/A	BL	N/A
Diisobutyl phthalate(DIBP) 邻苯二甲酸二异丁酯(DIBP)	BL	BL	BL	BL	BL	BL	BL	N/A	BL	N/A

Tested Item(s)/测试项目	Screening Result/筛选结果 (mg/kg)									
	31	32	33	34	35	36	37	38	39	40
Lead (Pb)/ 铅(Pb)	BL	BL	BL	BL	BL	BL	BL	BL	BL	BL
Cadmium (Cd)/ 镉(Cd)	BL	BL	BL	BL	BL	BL	BL	BL	BL	BL
Mercury (Hg)/ 汞(Hg)	BL	BL	BL	BL	BL	BL	BL	BL	BL	BL
Total Chromium (Cr)/总铬	BL	BL	BL	BL	BL	BL	BL	BL	BL	BL
Total Bromine (PBBs & PBDEs) 总溴(PBBs & PBDEs)	X	BL	BL	BL	BL	X	N/A	BL	BL	BL
Dibutyl phthalate(DBP) 邻苯二甲酸二丁酯(DBP)	BL	BL	BL	BL	BL	BL	N/A	BL	BL	BL
Benzylbutyl phthalate(BBP) 邻苯二甲酸丁基苄酯(BBP)	BL	BL	BL	BL	BL	BL	N/A	BL	BL	BL
Di-2-ethylhexyl phthalate(DEHP) 邻苯二甲酸二乙基己基酯(DEHP)	BL	BL	BL	BL	BL	BL	N/A	BL	BL	BL
Diisobutyl phthalate(DIBP) 邻苯二甲酸二异丁酯(DIBP)	BL	BL	BL	BL	BL	BL	N/A	BL	BL	BL

Shenzhen Alpha Product Testing Co., Ltd./ 深圳阿尔法商品检验有限公司

Building i, No.2, Lixin Road, Fuyong Street, Bao'an District, 518103, Shenzhen, Guangdong, China

广东省深圳市宝安区福永街道立新路2号i栋阿尔法检验中心

# TEST REPORT

## 检测报告



Report No./报告号: A2112058-C01-R03

Page 8 of 17/第8页,共 17 页

### (1) Screening Result/筛选结果

Tested Item(s)/测试项目	Screening Result/筛选结果 (mg/kg)									
	41	42	43	44	45	46	47	48	49	50
Lead (Pb)/ 铅(Pb)	BL	BL	BL	BL	BL	BL	BL	BL	BL	BL
Cadmium (Cd)/ 镉(Cd)	BL	BL	BL	BL	BL	BL	BL	BL	BL	BL
Mercury (Hg)/ 汞(Hg)	BL	BL	BL	BL	BL	BL	BL	BL	BL	BL
Total Chromium (Cr)/总铬	BL	BL	BL	BL	BL	BL	BL	BL	BL	BL
Total Bromine (PBBs & PBDEs) 总溴(PBBs & PBDEs)	X	N/A	BL	N/A	BL	BL	N/A	BL	X	X
Dibutyl phthalate(DBP) 邻苯二甲酸二丁酯(DBP)	BL	N/A	BL	N/A	BL	BL	N/A	BL	BL	BL
Benzylbutyl phthalate(BBP) 邻苯二甲酸丁基苄酯(BBP)	BL	N/A	BL	N/A	BL	BL	N/A	BL	BL	BL
Di-2-ethylhexyl phthalate(DEHP) 邻苯二甲酸二乙基己基酯(DEHP)	BL	N/A	BL	N/A	BL	BL	N/A	BL	BL	BL
Diisobutyl phthalate(DIBP) 邻苯二甲酸二异丁酯(DIBP)	BL	N/A	BL	N/A	BL	BL	N/A	BL	BL	BL

Tested Item(s)/测试项目	Screening Result/筛选结果 (mg/kg)									
	51	52	53	54	55	56	57	58	59	60
Lead (Pb)/ 铅(Pb)	BL	BL	BL	BL	BL	BL	BL	BL	BL	BL
Cadmium (Cd)/ 镉(Cd)	BL	BL	BL	BL	BL	BL	BL	BL	BL	BL
Mercury (Hg)/ 汞(Hg)	BL	BL	BL	BL	BL	BL	BL	BL	BL	BL
Total Chromium (Cr)/总铬	BL	BL	BL	BL	BL	BL	BL	BL	BL	BL
Total Bromine (PBBs & PBDEs) 总溴(PBBs & PBDEs)	X	N/A	X	BL	BL	BL	BL	BL	N/A	X
Dibutyl phthalate(DBP) 邻苯二甲酸二丁酯(DBP)	BL	N/A	BL	BL	BL	BL	BL	BL	N/A	BL
Benzylbutyl phthalate(BBP) 邻苯二甲酸丁基苄酯(BBP)	BL	N/A	BL	BL	BL	BL	BL	BL	N/A	BL
Di-2-ethylhexyl phthalate(DEHP) 邻苯二甲酸二乙基己基酯(DEHP)	BL	N/A	BL	BL	BL	BL	BL	BL	N/A	BL
Diisobutyl phthalate(DIBP) 邻苯二甲酸二异丁酯(DIBP)	BL	N/A	BL	BL	BL	BL	BL	BL	N/A	BL

Shenzhen Alpha Product Testing Co., Ltd./ 深圳阿尔法商品检验有限公司

Building i, No.2, Lixin Road, Fuyong Street, Bao'an District, 518103, Shenzhen, Guangdong, China  
广东省深圳市宝安区福永街道立新路2号i栋阿尔法检验中心



# TEST REPORT

## 检测报告



Report No./报告号: A2112058-C01-R03

Page 9 of 17/第9页,共 17 页

### (1) Screening Result/筛选结果

Tested Item(s)/测试项目	Screening Result/筛选结果 (mg/kg)
	61
Lead (Pb)/ 铅(Pb)	BL
Cadmium (Cd)/ 镉(Cd)	BL
Mercury (Hg)/ 汞(Hg)	BL
Total Chromium (Cr)/总铬	BL
Total Bromine (PBBs & PBDEs) 总溴(PBBs & PBDEs)	N/A
Dibutyl phthalate(DBP) 邻苯二甲酸二丁酯(DBP)	N/A
Benzylbutyl phthalate(BBP) 邻苯二甲酸丁基苄酯(BBP)	N/A
Di-2-ethylhexyl phthalate(DEHP) 邻苯二甲酸二乙基己基酯(DEHP)	N/A
Diisobutyl phthalate(DIBP) 邻苯二甲酸二异丁酯(DIBP)	N/A

### (2) Test result for Chemical Confirmation

化学测试结果

#### (A) The test result of Hexavalent Chromium (Cr(VI))/ 六价铬(Cr(VI))的测试结果

Testing item/ 测试项目	Result/结果 (mg/kg)		
	4	5	8
Hexavalent Chromium (Cr(VI)) 六价铬(Cr(VI))	N.D	N.D	N.D

#### (B) The test result of PBBs&PBDEs / 多溴联苯和多溴二苯醚的测试结果

Testing item/ 测试项目	Result/结果 (mg/kg)	
	15	16
Sum of Polybrominated Biphenyls / 多溴联苯总和(PBBs)	N.D	N.D
Sum of Polybrominated Diphenyl Ethers /多溴二苯醚总和(PBDEs)	Nonabromodiphenyl ether (NonaBDE) / 九溴二苯醚:15 Decabromodiphenyl ether (DecaBDE) / 十溴二苯醚:483 Sum of PBDEs/多溴二苯醚 (PBDEs) 总量:498	Decabromodiphenyl ether (DecaBDE) / 十溴二苯醚:173 Sum of PBDEs/多 溴二苯醚 (PBDEs) 总量:173

# TEST REPORT

## 检测报告



Report No./报告号: A2112058-C01-R03

Page 10 of 17/第10页,共 17 页

Testing item/ 测试项目	Result/结果 (mg/kg)			
	31	36	41	49
Sum of Polybrominated Biphenyls / 多溴联苯总和(PBBs)	N.D	N.D	N.D	N.D
Sum of Polybrominated Diphenyl Ethers / 多溴二苯醚总和(PBDEs)	N.D	N.D	N.D	N.D

Testing item/ 测试项目	Result/结果 (mg/kg)			
	50	51	53	60
Sum of Polybrominated Biphenyls / 多溴联苯总和(PBBs)	N.D	N.D	N.D	N.D
Sum of Polybrominated Diphenyl Ethers / 多溴二苯醚总和(PBDEs)	N.D	N.D	N.D	N.D

**Remark:** N.D = Not Detected (<MDL or LOQ)/ 未检出 (小于方法检出限或定量限)  
**备注:** MDL = Method Detection Limit/方法检出限  
 BL = Below the screening limit/低于筛选限值  
 OL = Over the screening limit/高于筛选限值  
 IN= InconclusiveFurther chemical test/不确定性, 需要进一步测试  
 X = The range of needing to do further testing/需要做进一步测试的范围  
 \* = The screened result was found and further chemical test/筛选样品进一步化学测试确认  
 N/A= Not applicable/不适合  
 3σ= The reproducibility of analytical instruments/表明分析仪器的重现性  
 LOD =Limit of detection/检测限  
 LOQ = Limit of Quantification, The LOQ of Hexavalent chromium is 0.10 μg/cm<sup>2</sup>/  
 定量限, 六价铬的定量限为 0.10 μg/cm<sup>2</sup>  
 When conducting the test for PBBs&PBDEs, XRF was introduced to screen Total Bromine/  
 对于多溴联苯 (PBBs) 和多溴二苯醚 (PBDEs), XRF 筛选时其结果显示的是总溴含量  
 When conducting the test for Hexavalent Chromium, XRF was introduced to screen  
 Chromium exclusively/对于六价铬, XRF 筛选时其结果显示的是总铬含量  
 mg/kg = ppm = parts per million/百万分之一  
 #: Resubmitted date: December 28, 2021/重新送样日期: 2021 年 12 月 28 日  
 <1>: According to the declaration from the client, Lead (Pb) in the sample is exempted by  
 EU RoHS Directive 2011/65/EU based on 7(a) "lead in high melting temperature type  
 solders ( i.e. lead based alloys containing 85% by weight or more lead )"  
 根据客户声明, 样品涉及欧盟 RoHS 指令 2011/65/EU 豁免项第 7(a)条: 高温融化焊料中的  
 铅 (即:铅含量大于或等于 85%的铅基合金)。  
 <2>: According to the declaration from the client, Lead (Pb) in the sample is exempted by  
 EU RoHS Directive 2011/65/EU based on 7(c) " Electrical and electronic components  
 containing lead in a glass or ceramic other than dielectric ceramic in capacitors, e.g.  
 piezoelectronic devices, or in a glass or ceramic matrix compound".  
 根据客户声明, 样品涉及欧盟 RoHS 指令 2011/65/EU 豁免项第 7(c)条: 电子电气元件的玻  
 璃或陶瓷中的铅或玻璃或陶瓷基混合物中的铅, 电容器的介电陶瓷除外, 如压电陶瓷装置。

# TEST REPORT

## 检测报告

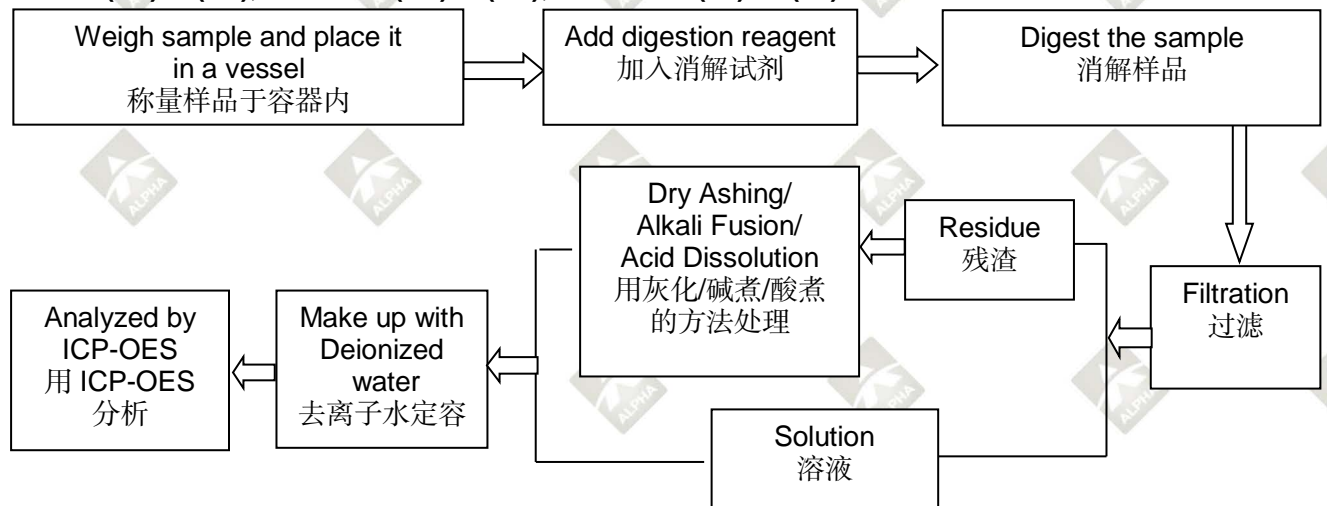


Report No./报告号: A2112058-C01-R03

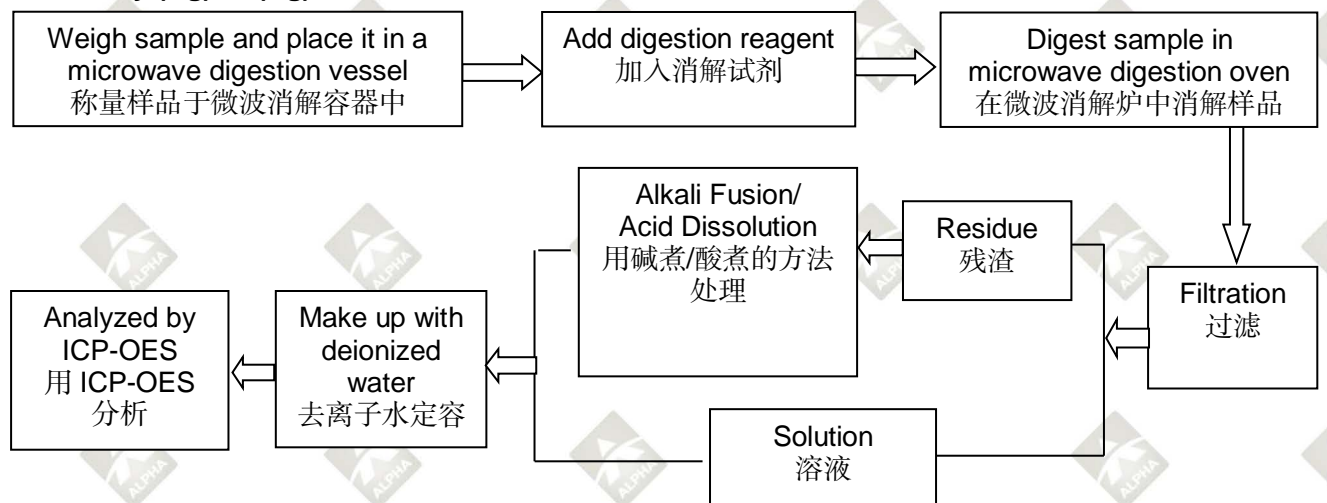
Page 11 of 17/第11页,共 17 页

### Test Process /检测流程

#### 1. Lead(Pb)/铅(Pb), Cadmium(Cd)/镉(Cd), Chromium(Cr) /铬(Cr)

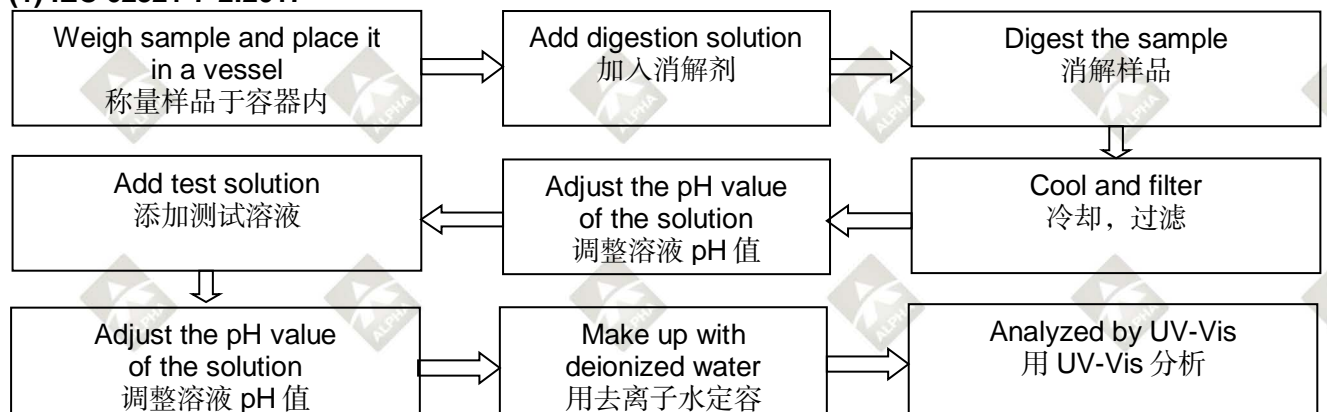


#### 2. Mercury (Hg)/ 汞(Hg)



#### 3. Hexavalent Chromium (Cr(VI))/六价铬(Cr(VI))

##### (1) IEC 62321-7-2:2017



Shenzhen Alpha Product Testing Co., Ltd./ 深圳阿尔法商品检验有限公司

Building i, No.2, Lixin Road, Fuyong Street, Bao'an District, 518103, Shenzhen, Guangdong, China

广东省深圳市宝安区福永街道立新路2号i栋阿尔法检验中心



# TEST REPORT 检测报告



Report No./报告号: A2112058-C01-R03

Page 12 of 17/第12页,共 17 页

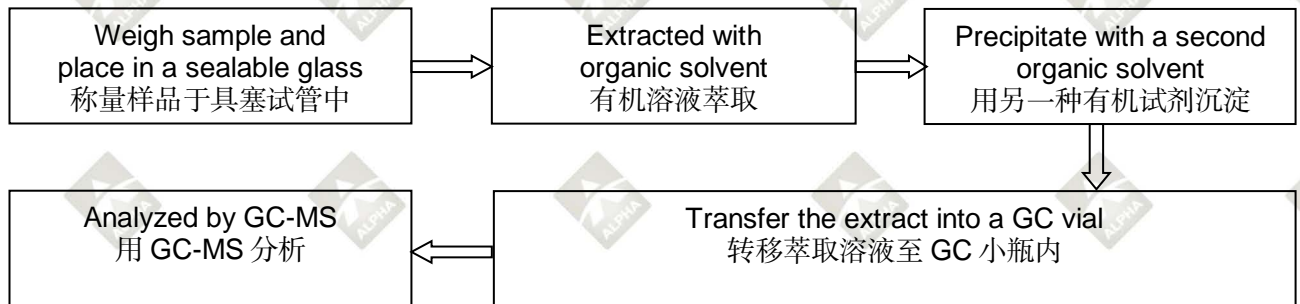
## (2) IEC 62321-7-1:2015



## 4. Polybrominated Biphenyls (PBBs), Polybrominated Diphenyl Ethers (PBDEs)/ 多溴联苯(PBBs), 多溴二苯醚(PBDEs)



## 5. Phthalates/邻苯二甲酸酯 (DBP, BBP, DEHP, DIBP)



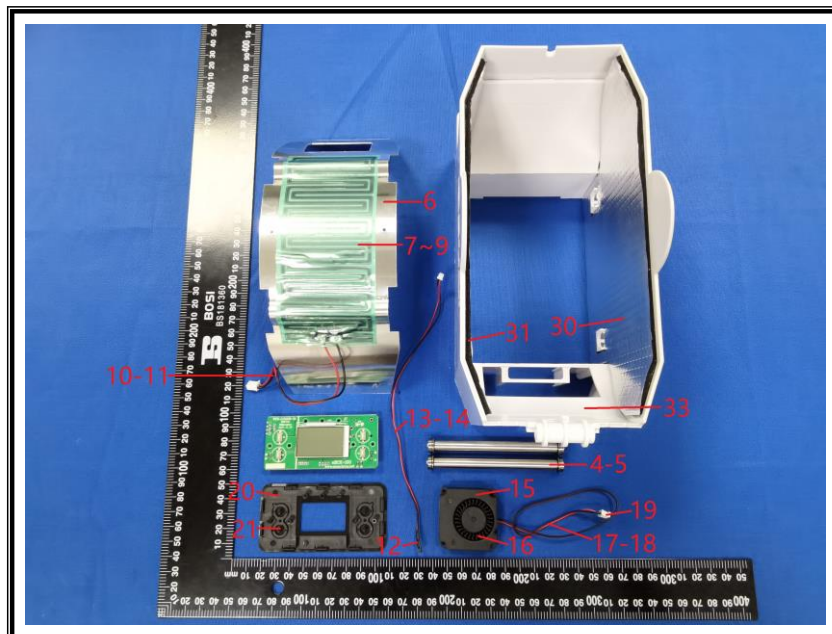
# TEST REPORT 检测报告



Report No./报告号: A2112058-C01-R03

Page 13 of 17/第13页,共 17 页

## Tested sample photo(s)/检测样品图片





# TEST REPORT

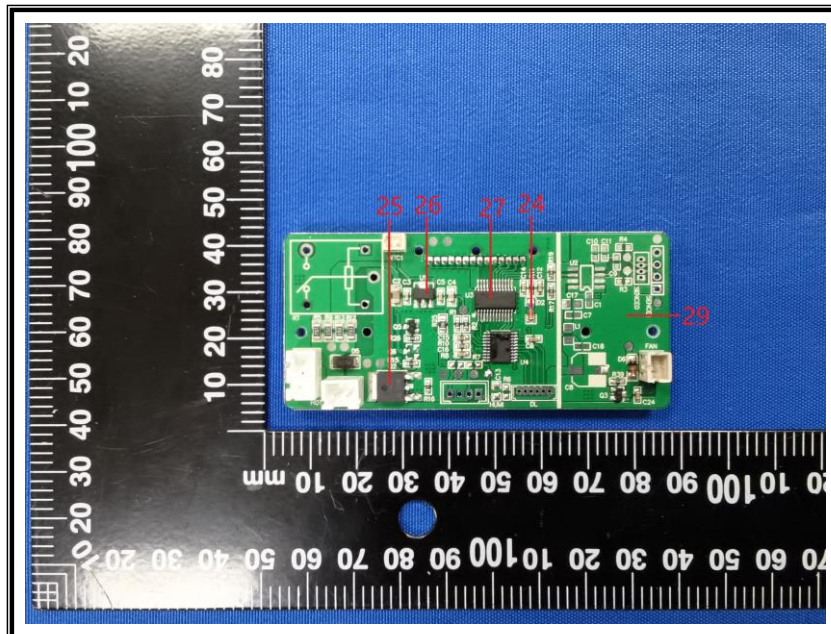
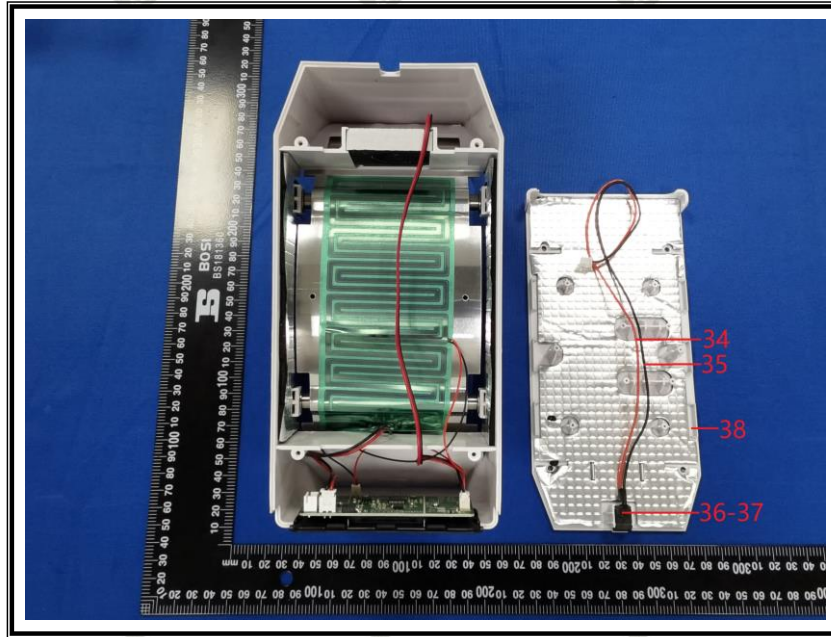
## 检测报告



Report No./报告号: A2112058-C01-R03

Page 14 of 17/第14页,共 17 页

### Tested sample photo(s)/检测样品图片





# TEST REPORT

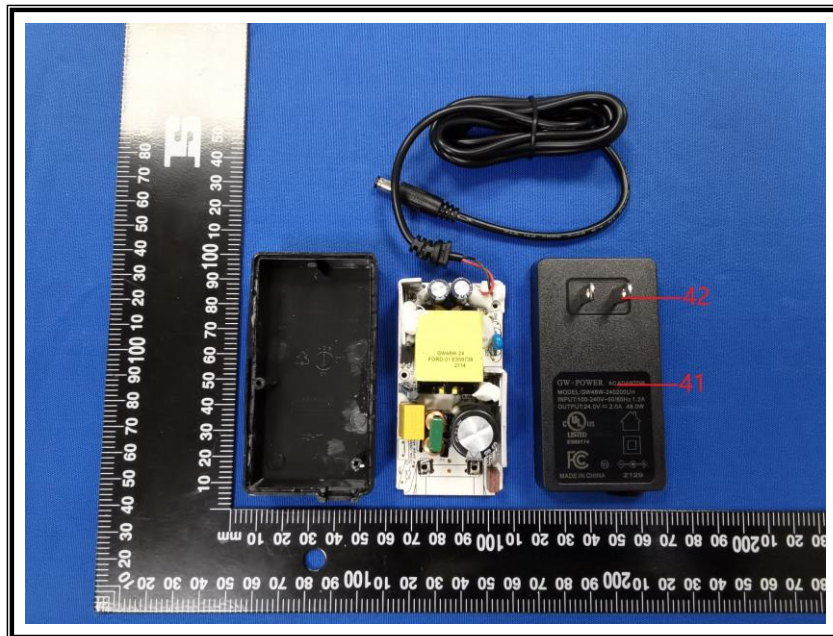
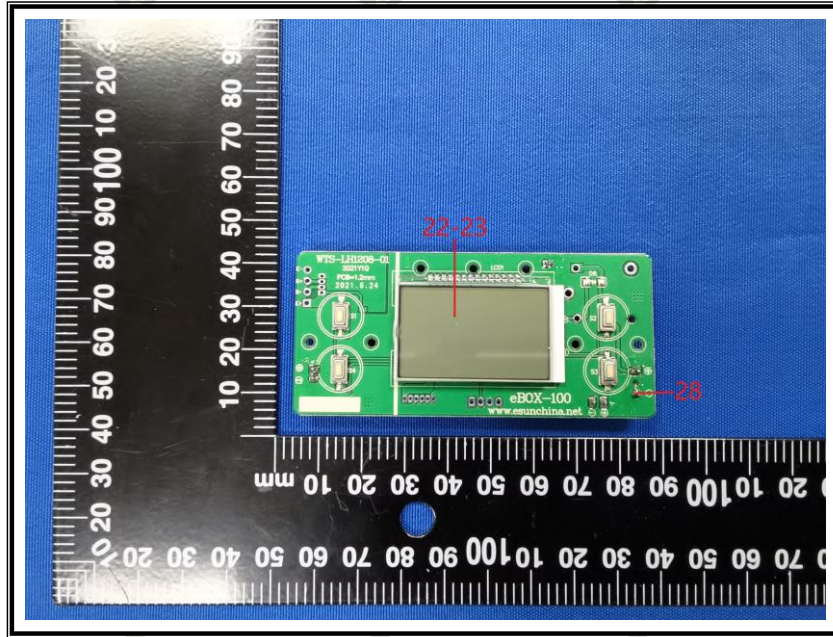
## 检测报告



Report No./报告号: A2112058-C01-R03

Page 15 of 17/第15页,共 17 页

### Tested sample photo(s)/检测样品图片



# TEST REPORT

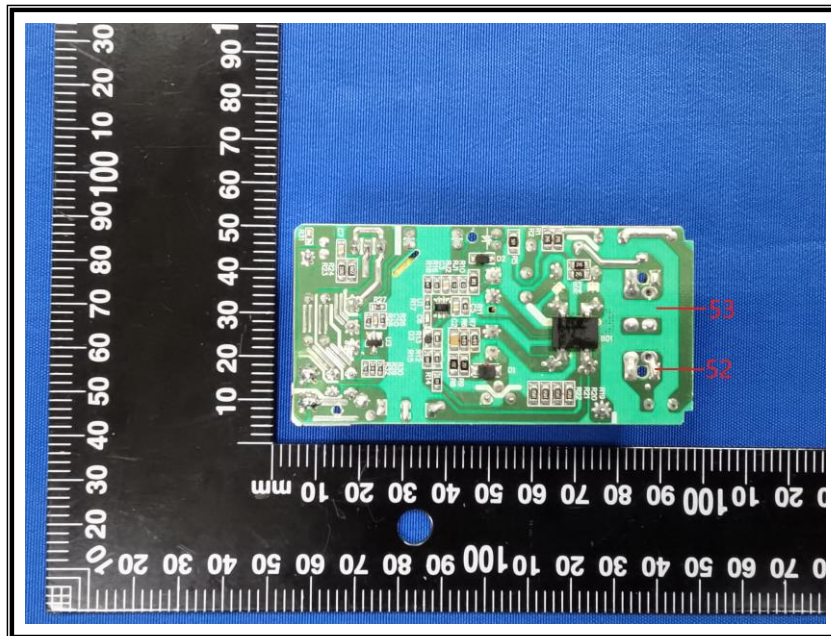
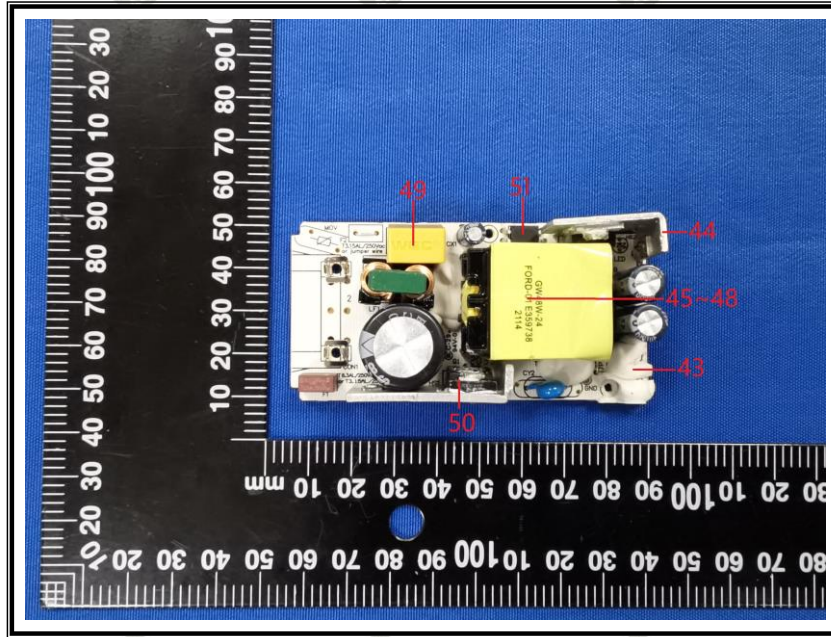
## 检测报告



Report No./报告号: A2112058-C01-R03

Page 16 of 17/第16页,共 17 页

### Tested sample photo(s)/检测样品图片





# TEST REPORT

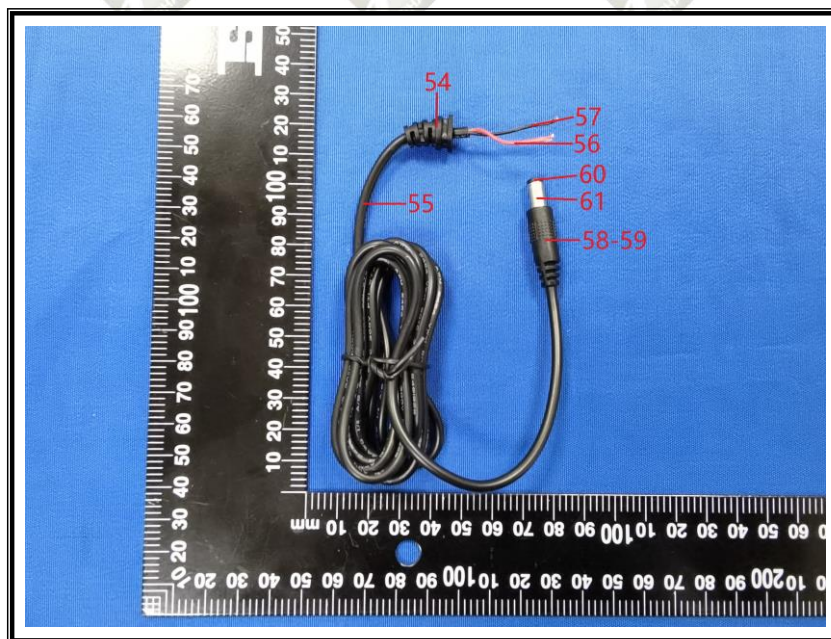
## 检测报告



Report No./报告号: A2112058-C01-R03

Page 17 of 17/第17页,共 17 页

### Tested sample photo(s)/检测样品图片



--- End of report /报告结束 ---

#### Statement/声明:

1. The sample(s) and sample Information was/were provided by the client who should be responsible for the authenticity which ALPHA hasn't verified;  
样品及样品信息由申请者提供, 申请者应对其真实性负责, ALPHA 未核实其真实性;
2. The result(s) shown in this report refer(s) only to the sample(s) tested;  
本报告检测结果仅对送测样品负责;
3. Without written approval of ALPHA, this report can't be reproduced except in full.  
未经 ALPHA 书面同意, 不得部分复制本报告。